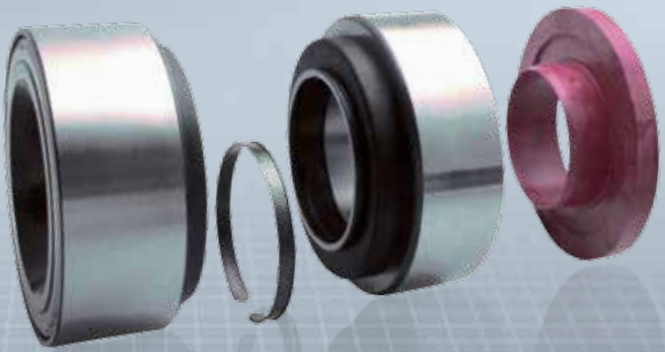


# FAG



## The FAG Repair Insert Unit (RIU).

The original and still the best.

**SCHAEFFLER**



**FAG**



## Advantages of the FAG Repair Insert Unit vs Insert Units.

<b>Genuine RIU</b>	<b>Insert Unit Solution (RIU copy)</b>
<b>Pre-greased in the factory</b> <ul style="list-style-type: none"><li>+ Correct grease specification</li><li>+ Correct grease quantity</li><li>+ No contamination possible during repair</li></ul>	<b>Open bearings (one side)</b> <ul style="list-style-type: none"><li>• Grease can leak</li><li>• Dirt and moisture ingress during assembly</li><li>• Contamination can lead to impairment of the rolling contact and damages to rolling elements and race track</li></ul>
<b>Pre-sealed in the factory</b> <ul style="list-style-type: none"><li>+ Seals are mounted error-free in the factory</li><li>+ Protection against ingress of dirt and moisture</li></ul>	<b>Loose attached seals</b> <ul style="list-style-type: none"><li>• Bearings are not pre-sealed</li><li>• Assembly of seals necessary</li><li>• Possibility of dirt and moisture ingress</li></ul>
<b>Pre-assembled in the factory</b> <ul style="list-style-type: none"><li>+ Minimizes the chance of fitment errors</li><li>+ Quick and simple installation</li></ul>	<b>Assembly during repair</b> <ul style="list-style-type: none"><li>• Several single components can lead to fitment errors</li><li>• The need to seal and assemble prolongs installation</li></ul>

## Unique. Cost effective. OE quality.

The unique FAG Repair Insert Unit from Schaeffler Automotive Aftermarket offers an innovative CV hub replacement solution that delivers the highest levels of safety and reliability in OE quality. Each RIU can service a multitude of Volvo, DAF and other popular truck and trailer applications.

Some wheel bearing producers now offer 'Insert Unit Solutions' that at first glance may appear to be the same as a genuine FAG RIU. In reality, they are a different product and do not offer the same benefits as an original FAG RIU.

A genuine FAG RIU offers a time and cost-efficient professional repair. It is a pre-assembled and pre-sealed bearing unit that can be simply pressed into the existing wheel hub, dramatically reducing fitting time and operating hours spent off the road. The RIU is also a much more economical option than replacing the complete hub assembly.



## For a multitude of vehicles.

The most popular applications in Europe are:

FAG article no.	Vehicle manufacturer
566074.H195	DAF
566193.H195	DAF
566283.01.H195	DAF
566425.H195	DAF, Renault, Volvo
566834.H195	DAF
566426.01.H195	Hyundai
566426.H195	Renault, Volvo
566427.H195	Renault, Volvo
566830.H195	SAF
566847.H195	SAF
569868.H195	SAF
570530.H195	SAF



### The complete solution for a professional repair.

Every FAG RIU box includes a special tool and easy-to-read installation instructions to guarantee a quick, simple and professional repair. Also available are a detailed technical brochure plus a workshop installation manual and video.

## From experts for experts.

A large amount of loose components in a wheel bearing kit means longer installation time and a higher risk of fitting errors leading to premature failure.

Don't compromise: The FAG Repair Insert Unit is the original and still the best repair solution for truck wheel bearing hubs in the market. A real game-changer for your workshop.

### FAG RIU

#### box content:

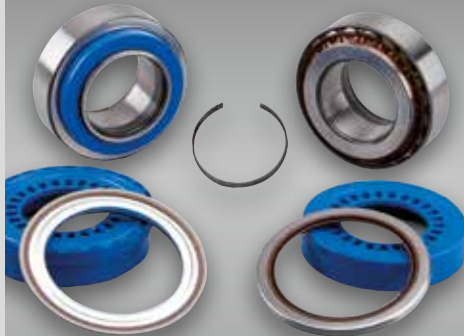
- Inboard bearing
- Outboard bearing
- Circlip
- Assembly tool



### Competitor

#### box content:

- Inboard bearing
- Outboard bearing
- Circlip
- Assembly tool
- Seals



**More garage knowledge:**  
[www.rexpert.com](http://www.rexpert.com)