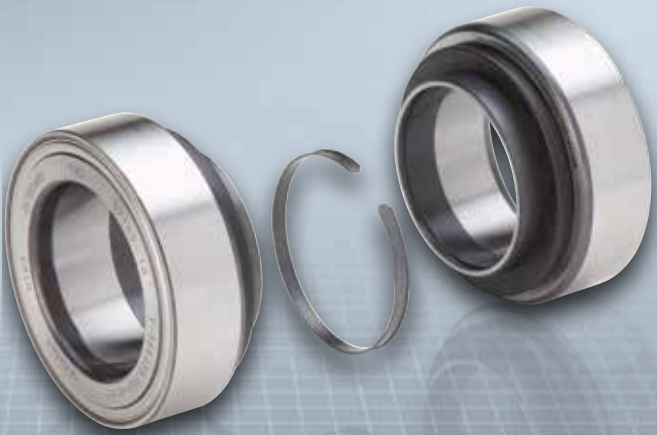


FAG



The Repair Insert Unit (RIU).

The unique repair solution for SAF axles.

SCHAEFFLER

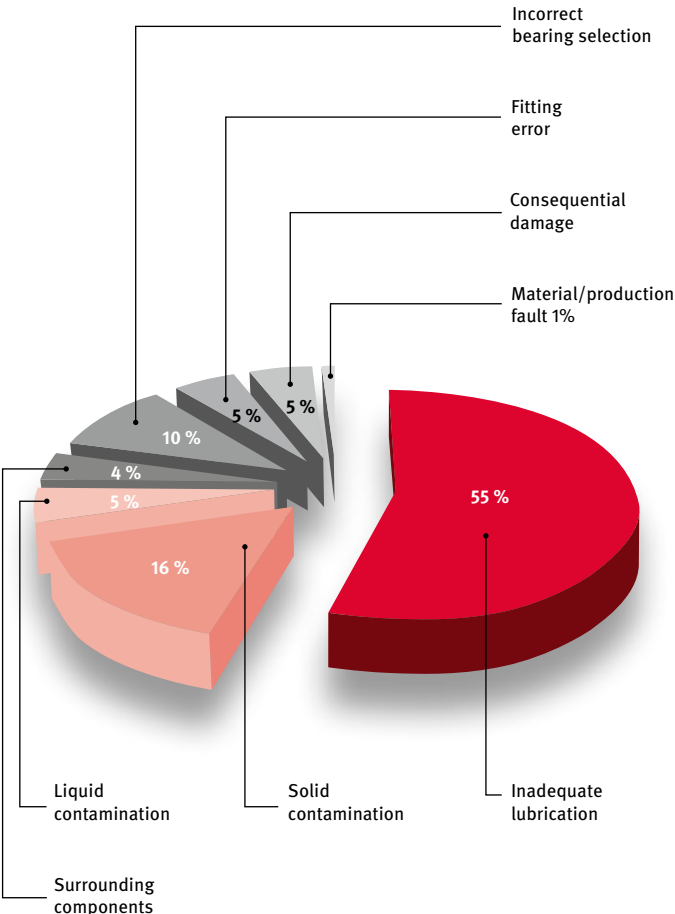


FAG



Possible causes of wheel bearing malfunction at a glance

A long, maintenance-free lifetime and high reliability are the main requirements for a commercial vehicle wheel bearing. However, more than 55% of all bearing failures can be attributed to inadequate lubrication and more than 20% of all bearing failures occur due to contamination caused by inferior sealing. Installing a FAG RIU ensures there can be no contamination due to moisture or dirt ingress, providing the longest possible bearing lifetime.



Unique. Cost effective. OE Quality.

SAF axles are predominantly factory fitted with an Insert Unit. Whilst the Insert Unit is assembled under optimum conditions in the factory, fitting conditions in the workshop are different. So, for a professional and safe hub bearing replacement, the best solution is to fit a Repair Insert Unit from FAG.

The RIU is a cost effective and OE quality hub bearing replacement. It is a pre-assembled, pre-lubricated and pre-sealed bearing unit that can be simply pressed into the existing wheel hub with the help of the included special tool. Consequently, fitting time is dramatically reduced, meaning a lot less valuable operating hours spent off the road.

The FAG RIU has many advantages compared to an Insert Unit

Category	Insert Unit (IU)	Repair Insert Unit (RIU)
Product	<ul style="list-style-type: none">• The IU incorporates standard bearing technology.• An IU is prone to breakdown caused by factors such as inadequate lubrication and contamination.• The operating life of an IU can be considerably less than that of a genuine FAG RIU.	<ul style="list-style-type: none">• Pre-assembled and lubricated for life, with the correct specification grease for optimum heat resistance and performance.• Pre-sealed to keep the grease inside the bearing and protect against dirt contamination.• Ready to install.
Fitting	<ul style="list-style-type: none">• An IU includes several loose components that require assembly, lubrication and sealing - increasing the possibility of fitting errors.• Because of the complicated installation process, fitting time for an IU is longer than that for a RIU.	<ul style="list-style-type: none">• Simple, trouble-free and quick to fit – thanks to pre-lubrication.• Comes complete with a special fitting tool.• With its universal design, one RIU can fit a wide range of commercial vehicle wheel hub applications.
Price	<ul style="list-style-type: none">• The Insert Unit is an economical repair solution for commercial vehicle wheel hubs, but has many disadvantages that outweigh any cost advantage.	<ul style="list-style-type: none">• Cost savings thanks to a quicker repair.• A longer lifetime provides better value-for-money.

SAF axle repair. Quick, easy and cost efficient – with the RIU from FAG.

From experts for experts.

The more loose components in a wheel bearing repair solution, the higher the level of fitting difficulty. This not only means longer repair times, but also the likelihood of fitting errors leading to premature failure.

Smart repair: The FAG Repair Insert Unit is the best possible repair solution for truck wheel bearing hubs in the market. The RIU is a real game-changer for your workshop.



Insert Unit box content:

- 2x Outer ring
- 2x Inner ring
- Circlip
- Grease
- Seals
- ABS ring (if necessary)
- 'O' Ring (if necessary)



FAG RIU box content:

- Inboard bearing
- Outboard bearing
- Circlip
- Fitting tool
- ABS ring (if necessary)
- 'O' Ring (if necessary)

Note for SAF axle types and axle descriptions:

Due to the different widths of the outer rings and the dust cover of the RIU repair solution, replacing an Insert Unit with a RIU can lead to confusion. The RIU is a pre-assembled unit and the seal is mounted in the outer ring. Therefore the outer ring is wider than in an Insert Unit. In addition a dust cover is mounted. During the assembly of an Insert Unit the shaft seal must be mounted separately. Also there is no dust cover, because the Insert Unit is disassembled.

FAG Repair Insert Unit for SAF axles

OE - No	OE Design	FAG - No	FAG Design
03 434 3010 00	IU	566830.H195	RIU
03 434 3011 00	IU	566847.H195	RIU
03 434 3012 00	IU	566830.H195	RIU
03 434 3018 00	IU	569868.H195	RIU
03 434 3019 00	IU	570530.H195	RIU
03 434 3020 00	IU	570530.H195	RIU
03 434 3021 00	IU	570530.H195	RIU
03 434 3022 00	IU	570530.H195	RIU

More garage knowledge:
www.rexpert.com