

Assembly instructions for Idler Pulley 532 0158 10 and 532 0189 10

Manufacturer:

Audi, Skoda, Volkswagen

Model:

- **Audi** A4, A6, Allroad, A8
- **Skoda** Superb
- **Volkswagen** Passat, Phaeton

Engine:

2.5 TDI and 4.2 V8

LuK AS Part No.: 532 0158 10 (old)
532 0189 10 (new)

OE-No.:

059 109 244 (old)
059 109 244 B (new)

The idler pulley **532 0158 10** has been replaced by **532 0189 10**.
The screw included in the packaging **must** be used for the assembly of the idler pulley.

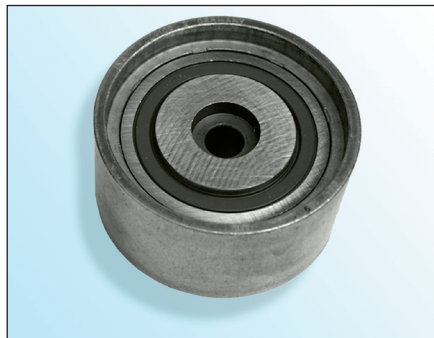


Fig. 1: 532 0158 10 (old version)

The idler pulley **532 0158 10** must be fitted with an hexagonal socket head screw with a thread length of **40 mm**.

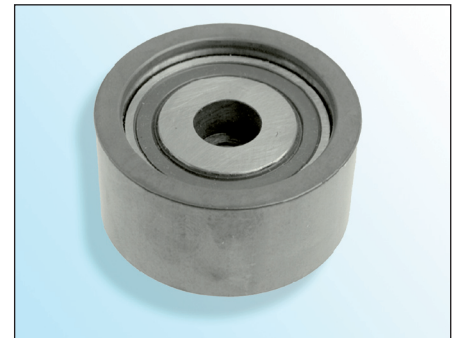


Fig. 2: 532 0189 10 (new version)

The idler pulley **532 0189 10** must be fitted with an hexagonal socket head screw with a thread length of **30 mm**.

Using incorrect screws can lead to damage to the engine!

Appropriate spare parts can be found in our on-line catalogue at www.Schaeffler-Aftermarket.com or at www.RepXpert.com.

Issued 11.2007
INA 0008

Technical subject to change
© 2007 LuK-Aftermarket Service oHG

For further information:

Phone: +44 (0) 14 32 264 264*
Fax: +44 (0) 14 32 275 146
Info@LuK-AS.co.uk
www.Schaeffler-Aftermarket.com
* Calls from within the UK 08457 001100

